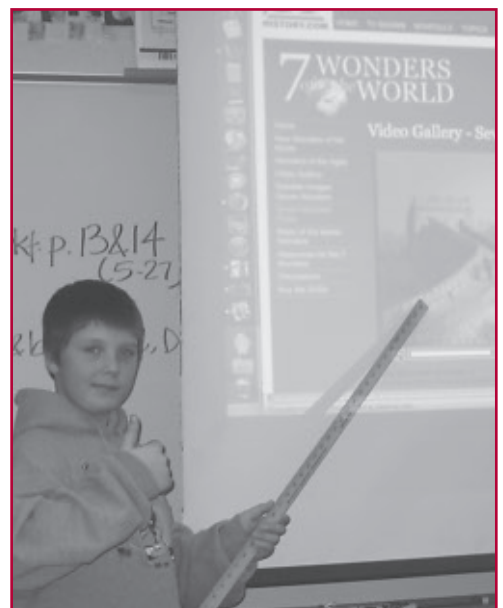
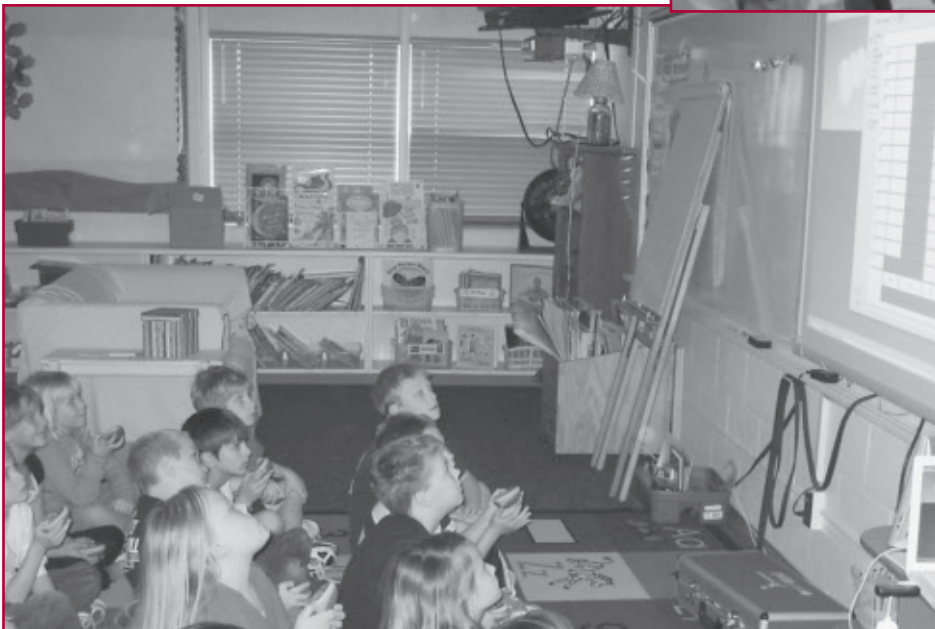
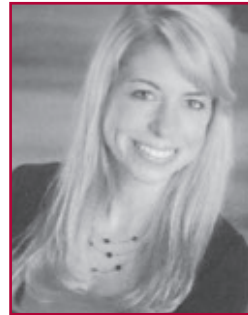
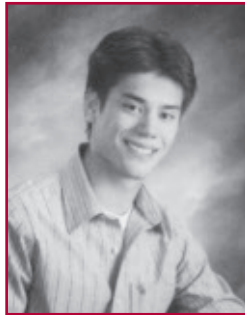




Grand Forks

FOUNDATION FOR
EDUCATION
2010 ANNUAL REPORT

Enriching Grand Forks
Public Schools with
grants, scholarships, and
alumni services.



FROM THE BOARD PRESIDENT

Since 1987 the Grand Forks Foundation for Education has been supporting and expanding educational opportunities for the students of the Grand Forks Public Schools. Through your generous donations the Foundation has grown in excess of two million dollars. With this significant support the Foundation awards grants, scholarships and provides alumni services.

With the support of the Foundation, the mission of the Grand Forks Public Schools is being achieved, providing opportunities for all students to develop their maximum potential. The grants and scholarships have outfitted numerous classrooms with cutting edge technology enriching the instructional and learning environment. Reading access has been improved because of the thousands of books that have been provided to all reading levels. Students have participated in exciting educational experiences with offsite learning through fieldtrips that otherwise would not have been possible. Our schools are recognized as leaders in the Arts and Humanities. The Foundation is proud to support and enrich these opportunities for our students. The Board of Directors recognizes the vitally important work of our teachers and staff in the Grand Forks Public School System and it's an honor and privilege to support them as they educate our promising youth.

The Foundation is led by our Executive Director, Jenny Arel, and supported by Executive Assistant Shannon Webber. Together they assist our public schools in supporting the teachers, staff and students, providing the best educational environment possible.

Remember to check our website at www.gffoundation.org for the latest information regarding your Grand Forks Foundation for Education. The website provides information regarding reunions, grants, scholarships and the many ways in which you can support the Foundation.

On behalf of the Board of Directors, I thank all of you who have supported the Foundation and the Alumni Network. Your generosity is appreciated and it truly makes a positive impact in the lives of the students it serves.



President Dan Swingen



The Foundation's **VISION** is to obtain ample capacity to support education and provide all Grand Forks Public School students and educators with maximum opportunities for excellence.

The Foundation expects to achieve its vision by fostering resources which:

- Support a climate that nurtures every student and reveres excellence in teaching.
- Fund innovative programs identified by schools as vital for students and the community.
- Make it possible for every student to participate in school experiences.

Ten **VALUES** underlying the Foundation's Purpose and Vision

1. Students and educators are of the highest importance to the Foundation.
2. Excellence in student achievement and effective stewardship are essential Foundation outcomes.
3. Funding for education enrichment and innovation is the Foundation's foremost method to achieve excellence in student achievement.
4. Effective stewardship calls for the Foundation to become known as the primary vehicle that receives and allocates private support for the Grand Forks Public Schools.
5. The Foundation's reputation for effective stewardship will be built on valuing donors, acting with integrity, and responsibly managing and awarding assets.
6. The Foundation funds a diverse curriculum that is guided by the Grand Forks Public School District.
7. Helping individual needy students and supporting scholarships are important methods for student achievement.
8. The Foundation supports co-curricular experiences as a valuable aspect of public school education.
9. A mutually advantageous relationship between the Foundation and the Grand Forks Public School District is essential.
10. Strong connections with alumni, donors, and educators are essential.

*The Foundation's
PURPOSE
is to improve the
quality
of education
in the Grand Forks
Public Schools
by raising
private
support for
new and enriched
opportunities.*

CF INDUSTRY & IMPACT GRANTS

Bill and Shirley Brown Endowment for Education

Bill and Shirley Brown

PURPOSE: The Bill and Shirley Brown Endowment continues to impact many students of the Grand Forks Public Schools. An endowment was established in 2004 with the generous support of Bill Brown, a Grand Forks 1936 Central High School graduate. Impact Grants provide larger awards, ranging from \$5,000 to \$15,000, for higher level projects in the Grand Forks Public Schools. Impact Grants are a catalyst for ideas or projects that are capable of having a lasting influence on a district-wide curricular area or grade level, or on a significant portion of students or educators at one or more schools. Ideas or projects must have prior administrative approval and must be capable of being implemented within the next academic year. Any educator or group of educators in the Grand Forks Public Schools may apply for an Impact Grant.

*CF Industries Classroom Minigrant Program*

The 4th grade students of Grand Forks Public Schools receive \$2500 to attend Experience Agriculture: Special Assignment Pizza and The Childrens Water Festival. Fourth grade students experience a field trip where they visit a series of seven booths, each of which describes an agricultural product produced right here in the Red River Valley. Themes of the seven booths are: nutrition, dairy products, vegetables, sugar, beef & pork products, wheat, and oil products. In the process of visiting and participating in the hands-on activities at each booth the students come to realize that the agricultural products that are produced right here, can be made into something every fourth grader is familiar with, PIZZA!

The Childrens Water Festival is an annual education event provided by the Dakota Science Center. Again, 4th grade Grand Forks Public School students are offered hands on opportunities to learn about the importance of water quality, agriculture, recreation, wildlife habitats, history of water use, and water's significance in terms of its importance to the survival of all living creatures.

The curriculum is designed for 3 separate 25 minute hands-on presentations and an exhibit hall tour. Students are also provided with an activity booklet and resource packet to continue learning in the classroom.

FOUNDATION MINI GRANTS

PROGRAM GRANTS from the Foundation can provide new and enriched educational opportunities across all subject areas in the Grand Forks Public School curriculum.

Most Foundation grant funding is derived from income on investments, from direct donor contributions, or from re-granting of major gifts. From these funding sources, the Foundation:

- Hands-on experiences
- Field trips
- Technology
- Specialized equipment in the areas of science and math
- Increases opportunities for students in music, drama, and visual arts

The Foundation awards grants in all grade levels and in all areas of curriculum of the local public school district. Funding is provided within four broad categories of interest:

- Special projects that support teaching and learning.
- Enriched libraries and fine arts
- Imaginative opportunities for new curricula.
- Professional development for educators

2009 Grant Recipients

\$1600 to Cassidy Bina and Kelly Elementary, for Student's Learning Centers.

\$282.50 to Chris Skjerven and Century Elementary, for Geology, Geography, and Climate of ND.

\$282.50 to Sheryl Nesseth and Century Elementary, for Frontier Era of ND.

\$282.50 to Deb Stahlberg and Century Elementary, for The Early Settlement of ND.

\$282.50 to Tim Rygh and Century Elementary, for Citizenship of ND.

\$360 to Lana Wages and Kelly Elementary, for Friends Forever Program.

\$480 to Travis Herbeck and Lake Agassiz Elementary, for Clockwise: The Clockwise System.

\$1050 to Beth Olson and Ben Franklin Elementary, for Focus on Learning.

\$1000 to Judy Hager and Schroeder Middle School, and Kari Budge and South Middle School, for Playaways

\$665 to Deb Boucher and Schroeder Middle School, for Student's Teaching Parents.

\$400 to Katie O'Neil and Lewis & Clark Elementary, for Enhancing Language and Math Centers.

\$400 to Karla McDonald and Phoenix Elementary, for First Grade Literacy Centers.

\$1715 to Janell Bethke and West Elementary, for Activotes.

\$1500 to Gary Mrazek and Red River High School, for Building a Hybrid Electric Car.

\$372 to Leslie Bjelde and Lake Agassiz Elementary, for Math, Math is So Much Fun.

\$300 to Andrea Hastings and Lake Agassiz Elementary, for Sensory Integration and Regulation.

\$1050 to Nikki Polum and Schroeder Middle School, for InFocus Projector.

\$1030 to Pat Merritt and Valley Middle School, for MUZZY: A Tool Kit for Language Learning.

\$300 to Susan Zukowski and Phoenix Elementary, for Calm, Cool, Collected Learners.

\$299 to Jessica Sporbert and Viking Elementary, for Sensory/Activity Break Room.

\$410 to Jim Whalen and Central High School, for Science Museum Field Trip.

\$425 to David Nowatzki and Red River High School, for Physics Field Trip to the Soudan Underground Mine

\$1715 to Lindsey Stevens and Kelly Elementary, for Engaging Assessment



SPECIAL AWARDS

The *Nelson-Miller Award* honors extraordinary volunteerism in the Grand Forks Public Schools. School staff members, PTOs, and Booster Clubs are invited to nominate an individual or group whose extraordinary volunteerism is making a difference at their school. One or two recipients are honored annually in the spring. School or school-related volunteer organizations will receive a \$250 contribution in honor of their recipient.

2009 Nelson- Miller Award Recipient

Mr. David Krogh: Mr. Krogh has volunteered his time in many different ways at Century Elementary. He has spent countless hours working with students in guided reading groups, reading with boys needing support in the area of reading, assisting fifth graders with pre-algebra enrichment, reteaching math concepts to students needing extra support, giving one-on-one support in spelling, working with small math groups.



Mr. Krogh is truly an extraordinary volunteer. He is a natural teacher and takes advantage of teachable moments. David's kindness stretches beyond the classroom to helping with field trips, vision screening, and many other areas of need at Century Elementary.

Our children love Mr. Krogh!

Past Award Recipients

2008: Michelle Hull

2007: Dana Drees

2006: Dave and Karen Molmen and Cynthia Vinson

2005: Dorothy Zahradka and Tim Pribula

2004: Diann Egeland

2003: Cindy Peterson and Pat Seaman

2002: Lori Potter

2001: Blanca Richmond; Loree and Keith Stenhjem; and Terry and Molly Kuntz

2000: Mary Dale Hansen and Kathy LaDouceur

1999: Paula Reddick; Dale and Nancy Erickson; Jack Atkinson

1998: Lorraine Quale and Hope Murphy

1997: Fred and Jane Lukens and Gene Durieux

1996: Jeanne Anderegg and Jackie Uthus

1995: Joyce Larson and Cheryl Molenaar

1994: Marlon 'Buck' Kasowski and Vivian Rydell

1993: Arlyce Gibbs and Lee Barnum

1992: Carlton Nelson and Don Miller

ENDOWED AND RESTRICTED FUNDS

Board Designated

Foundation Mini-Grants Fund Anne Lindaas Endowment
Unrestricted Endowment

Fields of Interest

Bill and Shirley Brown Endowment for Education For grants to enrich all areas of curriculum in the Grand Forks Public Schools.

Linda Christenson Humanities Grant Endowment To provide first-hand experiences in performance, literature, writing, languages, or other humanities subjects.

Bjertness Staff Development Fund For grants that develop or improve teaching skills.

Flood of Kindness Fund to help schools nationwide who are recovering from disasters.

Shirley Kuhn Fund to help with special projects at J. Nelson Kelly Elementary.

Gertrude Wiegman Fund to help support elementary library and field trip needs.

Nathan Wyum Endowment to fund special needs or projects at Schroeder Middle School.

Math, Science, and English

Banik Family Trust for chemistry and science at Central High School.

Dufwa-Schild Academic Fund for math and English needs at Central High School.

Wayne Peterson Science and Aerospace Fund for elementary student experiences “relative to anything that flies.”

Steve Robinson Endowment for grants to enrich education of students and professional development of educators in physics, chemistry, and biology.

Permanently restricted endowed funds are the backbone of the Foundation’s funding for education and scholarships. They enrich students’ educational experiences in many academic areas.

Named endowments often are arranged as a lasting tribute to or in memory of a notable educator, family member, or student. A named endowment provides a legacy of support for an educational program or scholarship.

To learn more about establishing an endowment please contact Jenny Arel, Executive Director, at 701-787-4867 or at jenny.arel@gfschools.org

Music, Drama, and Arts

Bartholomew-Zimmerman Theatre Arts Fund for theatre arts needs at Central High School.

Summer Performing Arts Endowment to support the SPA program, for remedial or advanced performing arts.

Elementary Art Endowment for under-funded visual arts in Grand Forks elementary schools.

Adeline Bjork Art Education Fund for visual arts in Grand Forks high schools.

SCHOLARSHIPS

Alerus Good Citizen Scholarship for both Central and Red River High School graduates who've demonstrated citizenship, a work ethic, and their best effort academically.

* **American Crystal Sugar Company Scholarships** for graduating Red River and Central high school seniors pursuing a post-secondary education in one or more of the following fields of study: science, agriculture, engineering, mathematics, or technology.

Barnum Performing Arts Scholarships for drama students and technicians in drama.

John Beach Scholarship for a Central High School student who is either a participant or a supporter of both music and athletics.

Herman Berg Memorial Scholarship for a graduating senior from Central High School who are interested in agriculture-related study or endeavors.

Berg Scholar Athlete Award for CHS student athlete who will be attending an NCAA Div II, Div III, or NAIA college to continue their football career.

Vincent Berg Scholarship for needy students district-wide in grades nine through twelve, to help enhance their high school experiences.

* **Esther Blecha Foreign Language Studies Scholarship** for a current Central High School student wishing to study foreign language arts abroad or a graduating Central language arts student who is pursuing a post-secondary education.



Alexis Mattson,
Everson Scholarship
recipient

Ed and Bea Bohnhoff Scholarship for a football player graduating from Central High School.

Markus Bryant Spirit Scholarship for a graduating Central High School student honored as a Spirit Award recipient.

Kathleen Dunn Scholarship for Red River High School graduating seniors.

Edwards Award for Excellence in Social Studies for outstanding students in social studies graduating from Central and Red River High Schools.

Dona Erickson Scholarship for outstanding art students graduating from Red River High School.

Denny Everson Music Scholarship for a graduating senior from Red River High School who was actively involved in the music department.

Evju and Pletan Math and Science Scholarship for a Central High School graduate who has demonstrated scholarship in advanced math and/or science and has significant financial need.

Joe H. Ford Scholarship for a graduating male or female student-athlete at Central and Red River High Schools who demonstrated dedication to the school's basketball team.

Anne Fritzell Scholarship for female students graduating from Central High School.

Robert Fullmer Scholarship: For male students graduating from Central High School.

Sergio "Serge" Gambucci Scholarships for Excellence for the outstanding student-athlete graduating from Central and Red River High Schools.



Matthew McCreary,
Ratzlaff Scholarship
recipient

SCHOLARSHIPS, con't

Gershman Musical Instrument Scholarships: For needy students in district elementary schools.

Celeste Hackenberg Scholarship for female students graduating from Central High School.

Leo Haesle Scholarship for students playing stringed instruments in Grand Forks high schools.

Lawrence Hanson Scholarship: For students graduating from Central High School.

June E. Johnson Scholarship for a graduating Central High School girls interested in school or community government or the political process.

Ashley Leabo Scholarship for a graduating Community High School students pursuing a post secondary education not limited to a four year program.

Lewis & Clark Explorer Scholarship for a Grand Forks graduate who attended elementary school at Lewis & Clark.

Arnold Lindsay Scholarship for hockey players graduating from Red River High School.

Frau Merritt Scholarship for a Red River High School senior who has completed at least three years of a foreign language and is pursuing a post secondary education.

Mykel MacCarthy Scholarship for a Central or Red River High School Student who is pursuing a post-secondary education with an emphasis in journalism, may include but is not limited to a four year program.

****Charles McCauley** for a graduating Central High School student who is pursuing a post-secondary education, and should be furthering his or her education in the field of music.

Julian Norby Hands Up For Kids Scholarships: To help needy K-8 students fully participate in school-related opportunities.

John and Jean O'Keefe Scholarships for students graduating from Central and Red River High Schools.

Gordon "Red" Opstad Scholarship for a graduating Central High School student who is pursuing a degree in education, which may include but is not limited to a four year program. The student should have also attended either South Middle School or Valley Middle School and have a GPA between 2.75 –3.5.

Pelton Scholarship for students graduating from Community High School.

* **Bill Pond Music Scholarship** for a graduating Central High School senior involved in instrumental music.

* **Leonard 'Buzz' Ratzlaff Scholarship** for a graduating Central High School student who is pursuing a post secondary education, which may include but it not limited to a four year program.

Red River Math Dept Scholarship for outstanding math students graduating from Red River High School.

Don Schlaefer Scholarship for students graduating from Central High School.

Elroy and Donald Schroeder Scholarship for students graduating from Central High School.

Sherwood Scholarships to enhance Central and Red River students' school music experiences.

Jason Stadstad Scholarship for a graduating Central High School student.

Kathryn E. Urich and Jeffrey D. Holmes 1983 Excellence Scholarship to a Central High School senior who excels in academics but also shows exemplary leadership skills in extracurricular activities, and/or community service.



Justin Hill, Lindsay
Scholarship recipient

****Denotes Scholarships established in 2009**

ALUMNI NETWORK

The Alumni Network's Purpose is to establish a bond with alumni and friends of the Grand Forks Public Schools, and help them stay connected with former schoolmates and teachers, and with news of their schools.

All alumni, retired educators, and friends of the schools are invited to become Network members. Currently, about 2,500 alums nationwide have joined the Alumni Network. The Alumni Network is sustained by member fees and gifts to the Network.

Services provided by the Alumni Network:

- The Alumni Network's *Red Cent* newsletter, issued four times yearly for members of the Alumni Network.
- The Alumni Network's website, featuring an alumni search, class reunion info, and on-line updating of addresses.
- The Network assists reunion committees and sponsors its own reunions and get-togethers from time-to-time.
- The Network helps preserve school history at both Central and Red River High Schools, via school museum funds, preservation of back issues of school newspapers, and collections of school annuals.

Alumni Network Advisory Committee:

- Dick Soule, Chair, Red River '69
- Tracy Helgerson Abentroth, Red River '78
- Laurie McEnroe Bakke, Red River '73
- Barry Branvold, Central '70
- Dimpy Johnson Budge, Central '34
- Dan Dybwad, Central '66
- Shirley Zintel Emerson, Central '48
- Greg Nelson, Red River '75, Red Cent Editor
- Diane Sondreal Hilde, Red River '71
- Kathy Keifenheim Hill, Red River '68
- Sandy Jacobson Rios, Central '69
- Ken Sherwood, Central '49
- Virginia Brett Stewart, Central '51
- Jody Thompson, Central '80
- Tera Swartz Vanyo, Red River '98



Dick Soule, Advisory Committee Chair



Greg Nelson, Red Cent Editor



The Red Cent newsletter is a popular publication for alumni and friends who join the Alumni Network.

The Alumni Network is maintained and operated by the Grand Forks Foundation for Education, Inc., which is a 501(c)3 non-profit school foundation. Contributions and Alumni Network member fees are tax deductible.



FINANCIALS

STATEMENT OF FINANCIAL POSITION

As of June 30, 2009 (with comparative totals for 2008)

ASSETS:	<u>2008</u>	<u>2009</u>
Cash	\$4,813	\$1,118
Investments	\$374,699	\$117,000
Unconditional Promises to Give, Net	\$6,814	\$4,457
Due From GFPS	\$13,095	
Investments Held for Endowment Purposes	\$1,484,006	\$1,503,610
Office Equipment (Net of Accum Depreciation)	<u>\$ 5,980</u>	<u>\$3,148</u>
TOTAL	<u>\$1,889,407</u>	<u>\$1,629,333</u>
 LIABILITIES & NET ASSETS:		
Accounts Payable	\$1,189	
Short-Term Grants and Scholarships Payable	<u>\$6,459</u>	<u>\$1,630</u>
TOTAL LIABILITIES	<u>\$7,648</u>	<u>\$1,630</u>
 NET ASSETS:		
Unrestricted	\$125,776	\$(26,926)
Temporarily Restricted	\$271,977	\$151,019
Permanently Restricted	<u>\$1,484,006</u>	<u>\$1,503,610</u>
TOTAL NET ASSETS	<u>\$1,881,759</u>	<u>\$1,627,703</u>
 TOTAL	<u>\$1,889,407</u>	<u>\$1,629,333</u>

BOARD OF DIRECTORS



Dan Swingen



Monica Musich



Mark Hall



Dr. Terry Brenner



Scott Berge

Executive Committee:**President:**

Dan Swingen, Swingen Construction

Vice President:

Monica Musich, Valley Dairy

Assistant Vice President:

Mark Hall, Alerus Financial

Executive Secretary:Dr. Terry Brenner,
Grand Forks Public Schools**Treasurer:**

Scott Berge, Drees Risky, Vallager

Executive Director:

Jenny Arel

Directors:Kelly Johnson,
Grand Forks Public SchoolsAmanda Silverman Kosior,
JLG Architects

Melissa Kuhlman, Grand Forks

Brian Osowski, Grand Forks

Dr. Jon Raymond, Altru Hospital

Susie Shaft, University of North Dakota

Lisa Sondreal, Grand Forks

Sandy Rios, University of North Dakota

John Warcup, Letnes Marsall Swanson Warcup Ltd

Charlie Zick, Retired GFPS Administrator

Excellence in Stewardship

The Foundation staff and its advocates can help donors achieve their goals to sustain the school experiences that they value and that make the world a better place.

The Foundation has gift and investment management experience, as well as relationships with financial and legal advisors, to assist donors and to administer planned gifts to education.

Foundation leaders are ready to work with individual donors or their professional advisors, to include the school Foundation in estate and future gift planning.

GIVING CLUBS

Helping donors support educational values

The Foundation helps donors achieve their goals to sustain the school experiences that they value most. It would not be possible without donors like you to touch the lives of the students and educators of the Grand Forks Public Schools. With that we would like to recognize our donors for their financial contributions to the The Foundation for Education for 2009. (Those names in red entered the indicated giving club during 2009.)

Special Friends of Excellence

(Accumulative gifts of \$50,000 or more)

Bill Brown
US Bank

Bellringer

(Accumulative gifts from \$25,000 to \$49,999)

Alerus Financial
Anonymous
David Berg
David Bjork
Harold 'Hal' and Kathy Gershman
Hugo's
Gertrude Wiegman

Challenger

(Accumulative gifts from \$10,000 to \$24,999)

Charles Bartholomew Trust
Ben Bjertness Estate
William 'Bill' Bohnhoff
Bremer Bank
CF Industries, Inc.
Duane Christenson
Tom Edwards
Gordmans, Inc.
City of Grand Forks
Hi Temp Insulation, Inc.
Lloyd and June Noack
Jean O'Keefe
Ray and Mary Helen Pelton
Dr. Tamar Read
Phi Delta Kappa- UND
Lynn and Kathy Wyum

Guardian

(Accumulative gifts from \$5,000 to \$9,999)

Altru Health System
Mike Berg
Central High School Class of 1949
Lee Barnum
Barbara Beach
Bob and Sally Clayburgh
Dawn Day
Moine and Sharon Gates
Ron and Margo Gruwell
Hansen Ford Inc.
Metro Hyundai
H. Donald Kuhn
Glenn and Loretta Knudsvig
Barbara Lander
James R. Lunseth
Mike & Kitty Maidenberg
McKinnon Co. – The McKinnons and Sondreals
Norby's Work Perks – Doug and Sandy Norby
Grand Forks Herald
Joyce Pond (In memory of Bill Pond)
Ann and Mike Porter
Ryan Family Foundation
Steven W. Robinson
Mark and Gloria Sanford
David Schroeder
E. Dean Schroeder
Betty Thomas

Scholar

(Accumulative gifts from \$2,500 to \$4,999)

Deloris 'Lee' Barnum

Family of Esther Blecha

Brooks and Natalie Bollinger
Shirley Bostrom
Dave and Denise Britton
Banik Family Fund Lutheran Community Foundation
Richard Brown
CHS Class of 1939-43
CHS Class of 1965
CHS Class of 1980
Concrete, Inc.
Cassel Everson
Sandy and Rich Glas
Robert Ginsberg
Greenberg Realty
Lyle and Susan Hall
Larry and Ellen Hoiberg
William & Donna Hutchison
A. 'Rick' Johnson
Claudia and Bud Johnson
John Lambie

Robert and Patricia Lander

Mary H. Kato-Matsushita

Ellen McKinnon

Gordon Opstad
Beth and Darrell Randklev
Rydell's
Bill and Bev Schoen
Raymond Staley
Swingen Construction

Time Warner

Kathryn Uhrich and Jeffrey Holmes

Claudia Zimmer

Founder

(Accumulative gifts from \$1,000 to \$2,499)

Betty Absey

American Crystal Sugar

Lawrence Arason

Mike and Jenny Arel and Family

Tom Armstrong

Ron and Becky Bachmeier David Badman



Through the years, I've found it a terrific way to honor students, teachers, and staff I have known as a teacher, principal, and parent through a small gifts. Needs in our schools can not always be met through tax dollars. The Foundation provides a way for businesses and individuals to make a contribution to our schools and community.

Ann Porter-
Former Foundation Board Member
and Retired Teacher and Administrator

Theresa Ballard

John 'Jack' Barnes

John and Ida Belcher

George and Lois Benner

John Bennett

Dorothy Benson

Georgia Sue Black

Laura and Richard Block

Roger Blue

Ginny and Jim Bohlman

Founders Continued...

John W. and Lois Brett
Lois Brownlee
Gail Brunson
CHS Class of 1944
CHS Class of 1948
CHS Class of 1963
CHS Class of 1964
Cornel and Joani Kilber
Bob H. Clayburgh
John Clayburgh
Community Foundation of GF,
EGF, and Region
Frank Danner
Stephen E. Dippe
Dorothy Durick
Elroy E. and Judith Erickson
Judy Fair
Bob and Carlene Falos
Don and Barbara Feist
Keith L. and Joan Flom
Thomas and Carol Fontaine
Margaret 'Peg' Ford
Erik Fritzell
Lee Furman
Terry Garner
Gerrells Sports Center
Reinhold 'Riney' and Joan
Goehl
Frank Goeson
Grand Forks Education
Association
GFPS Lewis & Clark
Elementary
Ellen and Jack Gray
Greenberg Roofing
Bernard Gustafson
Benjamin Hallada
E. Jerome 'Jerry' and Mary
Anne Hanson
Lawrence Hanson
Tim and Jane Hanson
Ed and Barbara Harloff
William L. Harwood
Carolyn Havig
Arral 'A.J.' and Donna
Helgerson
David and Beth Helgerson
David L. Henderson
Gordon and Pat Henry
James Hesketh
Mary Ellen Holland
Mark and Cathy Holm

Russell D. Holm
Patty Howard
James Hoyme
David Hulteng
Italian Moon & Ken Towers
Judith Jacobi
Thelma Johnson
Ronald D. Kavli
J. Scott Kelley
John 'Jack' Kleven
John and Patricia Klokstad
Everett and Karen Knudsvig
Duane Kohoutek
Byron Krogen
Dan Kuhlman
Karen L. Kurta
Barbara Lander
Charles Larson
Karen Lawlor
Tim and Polly Lilleboe
Karen M. Lueck
Karen MacCarter
Mykel MacCarthy
Tim Malm
Macy's
Jim and JoAnn McKay
Curtis and Judy Magnuson
Kenneth Mellem
Pat Merritt
Donald C. Miller
J. Donna Miller
Rod Middlesteadt
Joel and Connie Mondry
David H. Munro
Eileen Nelson
Gary Nelson
Katherine Nelson- Tracey
John and Angie Nord
Rod and Kristi Nupdal
Jim Newland
Cheryl and Bruce Nyhlen
Luther 'Lute' Olson
Chris and Helen Panneck
Laura Jane Paulson
Ron Paulson
Ronald Peabody
Denny and Nancy Pickard
Emma Pike
Patty Purpur
David Riskey
RRHS Class of 1980
Casey and Bev Ryan
David and Ann Sande
Jeff Sande

Dave A. Schimke
Mark and Lori Schneider
John and Cynthia Shabb
Shaw Poster
Kenneth Sherwood
Stephen and Robin Silverman
Peter Simonson
James H. Smith
Doug E. and Judy Sobolik
Laurie and Jim Stenehjelm
**State Farm Companies
Foundation**
Jody and Machell Thompson
Don Thorson
Lynn Torrance Redlin
Louise Triskle
Elaine Unruh
David and Nan Vaaler
Vilandre Heating and Air
Conditioning
Theresa Wald
Donnabelle Weston
Barbara A. Williams
Bev Witt
Mikell 'Mickey' R. Wood
Xcel Energy
Roland Young
Charles and Colleen Zick

Director

*(Accumulative gifts from \$500
to \$999)*

Tracy and Vince Abentroth
Irene D. Adams
Julius and Hildegard Adler
C. Gordon and Carol
Amundson
Mary M. Andersen
**Donald and Virginia 'Jinny'
Anderson**
Harry Anderson
Robert C. Argall
Tom D. Armstrong
Marian Askim
Kenneth D. Bachellor
Ron M. and Becky Bachmeier
Donald E. Bahr
James S. Bailey
Eric L. and Laurie Bakke
Theresa Ballard
John 'Jack' and Hope Banik
Ronald S. Bannack
John and Kaye Beau Lac

Dorothy A. Benson
Tim J. Benson
Angeline 'Angie' Berg
Ronald and Trudy Bergh
Hjalmer 'Al' and Eva
Bergstrom
Frank Berry
Louise Biner



A few years ago my son Casey and I decided in lieu of exchanging Christmas gifts, to make a donation to a worthy cause. Since I've had the pleasure of teaching in the Grand Forks School System for many years, I felt strongly about donating to the Grand Forks Foundation for Education. Casey and I checked out the giving options and chose to make our donations to the Markus Bryant Scholarship Fund. Since Casey knew Markus, and I did not have the opportunity to meet him, I asked Casey to explain what this donation means to him.

"The time in which I was blessed to know Markus was far too short but oh, so meaningful to me. He had a gift of making you comfortable and an even greater gift of making you laugh. What he didn't know at the time was that he was blessing me with other gifts that have had a major impact on the person I've become. He taught me the greatest life lessons on courage, bravery, perseverance, and at last SPIRIT. While our gifts pale in comparison to the gifts he gave, he exemplifies the word SPIRIT and what it means to be a GFC Knight. I pray that whomever receives this scholarship takes it honoring his name. His SPIRIT defined logic and is with me every day, and through this scholarship, it can be with you tomorrow." Casey Blue

Directors Continued...

- Georgia Sue Black
Judd Blain
Dan Blue
Scott and Jodi Boettner
Karen M. Bohn
Walter Boltmann
Virginia 'Gingy' M. and John Bonnevillie
Jim W. Booty
Wendell 'James' Branvold
Hugh G. and A. Evonne Bray
John W. and Lois Brett
Michael Breza
Jay Britton
Marjorie H. Brizee
Randy R. and Merrilee Brown
Gail M. and Bob Brunson
Gary Budzeak
Ardell and Fern Bunde
Alan D. and Jill Burchill
Dewey J. Bushaw
Gerald W. Butz
CHS Class of 1947
CHS Class of 1950
Charles D. & Elynor B. Nelson Foundation
Charles Hurley Family Endowment
Mary Charlton
Bill M. Claypool
Denzil 'Bud' F. and Mary Beth Collette
Jim A. and Teresa Conklin
Dale Cox
Denis J. and Josie Daly
Lois A. De La Gardelle
Lorna G. Deady
Barb Decker
Dan J. Denis
Dayle Y. and Alan Dietz
ELM Family Foundation
Elizabeth 'Betty' Engen Patricia Erickson
Gailen W. and Harriet Evans
John E. Fallon
Kate Norman Fasth
George and Edith Feinstein
Don J. and Barbara Feist
Jim Fischer
Jack D. Fontaine
Wayne L. Fontaine
- Tom C. and Margy Gabrielsen
Serge L. and Eleanor Gambucci
William J. and Shirley Gangelhoff
Bonnie Geiermann
Harriet Gerszewski
Dusty and Arlyce Gibbs
Ray Gilbert
Daniel W. and Shirley Goodwin
Marie J. Gregory
Ruth K. Grina Buwolda and Robert Buwolda
Bernard G. Gustafson
Jerome P. Hager
Dolores 'Dee' D. Hake
Benjamin A. Hallada
Calvin J. Hallada
Helene K. Halverson Pomerantz
Jim and Yvonne Hanley
Jim and Mary Dale Hansen
Aileen Hanson
Keith E. Hanson
Margaret 'Peggy' L. Hanson
Jeff Harsch
Donn R. Hartford
John R. and Marcia Harty
Theodore 'Ted' H. and Terese 'Triss' Harwood
Mary Ann Haugen
Robert B. Haugen
Francis Haxo
Marilyn Y. Heimark
Howard J. Heuchert
Jeffrey Holm and Nancy Vogeltanz-Holm
Mark D. and Kathy Holm
Steven Holm
Robert R. and Patricia Hoop
Dorothy T. and Donald Hulteng
James B. Hundley
Shirley Isaac
Charles 'Bud' R. Jacobi
Duane R. Jacobs
Janice C. Jenson Wukits
Jeff A. and Janine Johnson
Phyllis Johnson
Joyce G. Jollo
Ron and Marilyn Kavadas
- Harold O. and Barbara King
Clyde Kobberdahl
Wayne Kobberdahl
Dick and Cindy Koons
Bruce and Mary Koppenhaver
Brian and Susan Kraft
Byron R. Krogen
Morris V. Kubousek
Jane M. Labudzik
Dorothy H. LaFournaise
Chris and Cindy Lander
Beverly Langheid
Lynn A. and Bette Jeanne Larsen
Scott J. Leigh
Marian Lien
Jim and Renee Lies
Donald L. Lingle
Daryll Loberg
Thoraine Loyd
Karen M. Lueck
Phyllis E. Lufkin
John Lund
Karen M. MacCarter
Colin D. MacDonald
Lynn H. Mahlum
Richard O. Mankie
Michelle C. McCauley(in Memory of Charles McCauley)
Karen P. McClennen
Brian C. McClure
Archie W. McCrae
Greg McCreary
Peter 'Kelly' McKenzie
Judy and Tim Megorden
Kenneth L. Mellem
Gail Meyer
Chip and Kristi Midboe Miller
Timothy Monda
Barbara B. Montoya
Dave H. Munro
David L. Nelson
James J. Nelson
Diane Nerheim
Jim R. and Myrna Newland
Joan C. Nisbet
James C. and Melody Nord
John O. Nord
Thomas Norman
Rod and Kristi Nupdal
- Dr. Larry P. Nybladh and Mrs. Karen Nybladh**
Peggy Jo H. O'Brien
Gerald Oehler
Glenn O. Offerdahl
Duane A. Olson
Annette S. Ophaug
Dean C. Opp
Derrell C. and Maureen Orr
Joanne Otteson
Darrell Overland
Gregory R. and Cynthia Page
Nels Palm
Chris and Helen Panneck
Ida Parenteau
Roberta L. Parker
Sharon Patow
Herbert H. and Sherlee Paulson
Robert Peabody
Roy E. Pearson
Allison Peterson
Linda Peterson White
Ross and DonnaLee Pettit
Jon and Joanne Plaas
Elizabeth 'Betty' L. Pladson
Todd J. Pladson
Ernest 'Punky' Pletan
Ken Polovitz
Douglas G. Quesnell
Neil Quigley
Drs. Jon and Laura Raymond
Blaine J. and Lori Ress
Diane M. and Patric Reuter
Arnold and Elaine Rice
Craig L. Rice
Peter A. and Betsy Rice
Sigurd 'Sig' and Marilyn Rimestad
Kenneth and Donna Rio
Sandy and Mark Rios
Phyllis Rodgers
Helene Rodningen-Feltman
Trevor Rowland
Michael D. Rubin
Edith Ruby
Ronald Rudrud
Stephanie Sanford-Kinsella
Nikki and Robert Seabloom
John and Jan Satrom
Ken and Mary Jo Schill

Friends of Education*(Gifts greater than \$25 given between January 1, 2009 through December 31, 2009)**(Excludes Alumni Memberships, which are listed separately)***Directors Continued...**

Dave A. Schimke	Ad Monkeys	Judy Hager	Residual Materials Inc.
Roger Schlaefer	Alerus Center	Agnes Hamerlik	Right Choice Electric, Inc.
Donald H. Schmoltd	Ameriprise Financial Services, Inc	Happy Grass	Ross and Ashley Rolshoven
Victor Schultz	Anchor Marketing, Inc.	Happy Joe's Pizza & Ice Cream	S & S Promotional Group Inc.
Mary Ann Scramstad	Theresa Bakken	Dustin and Bethany Hetletved	Lowell J. Schweigert
Margaret E. Shields	Casey Blue	Richard Dulcie Hill	Simonson Station Stores, Inc.
William E. and Cleo Shields	Diane Blue	Michael Hilst	Rae Spear
Mary Gail Simpson	Blue Moose Bar & Grill	MaxHoefs and Tana Setness Hoefs	Lee and Michelle Stadstad
Gary L. and Peg Skyberg	David B. Blumkin	Cynthia Warren L. Jensen	David and Joni Stanton
Gladys T. Smith	Daniel F. Boese	Darlene and Jerry Johnson	Terri A. Staples
Thomas H. Smith	Border States Trophy & Awards	Kelly and Darin Johnson	Stay & Play Pet Resort
Arden P. and Sharon Smutzler	Brady, Martz & Associates	Mike and Tori Johnson	Donald J. Steffan
Helen L. Solee	Elaine R. Brinkman	Steven L. Karpenko	Scott J. and Tricia Steffan
David E. Sperling	Margaret J. Bundlie	Keith's Security World	Stennes Funeral Home
Brad and Nancy Spicer	Steve L. Burian	Kelly School Staff	Sterling Carpet One Floor & Home
James A. and Joan Steenerson	Construction Engineers	Yulia Khayde	Dan and Kelli Tannahill
Donald B. Stewart	Crary Homes & Real Estate	Scott and Jill Kiel	Marlin W. and Laura Thoreson
Donald R. and Henedine 'Diane' Stewart	Custom Aire Inc	Dorothy J. Kulas	William J. and Kristie Tibert
Jim Stjern	Susie Dahle	Susan Lancaster	David Tiffany
Virginia L. Stringer	Dakota Supply Group	Van Larson	Universal Athletics
Dorothy Sullivan	John D. Dean	Trisha Mackenzie	Valdak Corporation
Maureen A. Sullivan	John D. Dean	Mayo Manufacturing Co.	Diane M. Vivian
Ken A. Thiede	Dobmeier, Inc.	McDonald's Restaurants	Tracy Walker
Robert Thompson	James Driscoll	Anne Meredith-Will	Devera and Alan B. Warcup
Judith A. and Ralph Thornton	Aaron T. Dunphy	Verona Mikkelson	Christopher and Carrie Weippert
Curt A. Thorpe	Eagles Crest Grill	Beverly L. Moline	John Weisser
Mike S. and Susan Trygg	Kyle E. Ellingson	Daniel B. and Janelle Mulroy	John and Beverly Whitcomb
Dennis H. Tufte	Farmers Union Insurance	Ronald O. Nessland	
Michael and Teri Tupa	Fisher Olson & Juntunen Ltd.	Noridian Mutual Insurance Co.	
Leroy E. Turcotte	Patricia Flaagan	Pearson Christensen & Clapp, PLLP.	
Judy A. Vatnsdal	H. Doug Fosse	Brent and Nikki Polum	
Diane Vivian	Grand Forks Blue Line Club	Patricia Qvammen	
Lyle P. Voiss	Grand Forks Fastbreak Club	R & K Jorgenson Ent., Grease Monke	
Loran D. Volland	Mildred H. Granger	Ralph Engelstad Arena, Inc.	
Howard and Janice Wavra	Great Plains Heating A/C & Plumbin	Kathy and Richard Ramsay	
Ellen Weber	Green Mill	Thomas Ratzlaff	
David C. Wentz	Gary Grove		
George Westin			
Merle Wilker			
Jack C. Williams			
Steve Wimpfheimer			
Robert P. Woutat			
Bob G. York			

***Congratulations to our Alumni Network
Members celebrating 10 Years!***

(Individuals who have been active with the Alumni Network since 1996)

Richard Blaine
Mary Blanchette
John and Dawn Botsford
William Buckingham
Gordon and Elaine Caldis
Carol Christiansen
Arlayne Clow
June Dobbs
Arlene Enyeart
Darryl and Karen Fahey
Diane Fought
Gary Foy
Barb Gast
Kathy Gershman
Arlyce Gibbs
Patti Griffis
Frances Grinde
Gail Groff
Darlene Holien
Patricia Hoop
Shawn and Julie Horn
Jean Hosick
Joyce Huard
Dale and LoAnn Kana
Patrick Keating
Lowell and Beverly King
Lynne Kitzmiller
Wayne Kobberdahl
Donna Koch
Daniel Kuhlman
Karen Kurta
Gary Kuster
Brian Lamb

Clifford Lee
Barbara Lehman
Dave and Sharon Lehr
Kelly McBain
Carolyn Melby
James Mellem
Phyllis Meyer
Carlene Moe
Dave Munro
Mary Nielsen
Penny Ollman
Ronald Olson
Mark and Trish Paulson
Ray and Mary Helen Pelton
Joanne Peterson
Betsy Polhamus
Dorothy Premac
Bart and Barbara Reigstad
Mary Reinertson-Sand
James Robertson
Dick and Charlene Sampson
Tom Sand and Mary Reinertson
Steve and Debbie Siemieniews
Marianne Steen
Yvonne Sve
Charlotte Swenson
Clara Syverson
Anne Thompson
Jody and Machell Thompson

Joan Tracy
Michael and Teri Tupa
Patty Unruh
Molly Volkerding
Duane Walsh
Dorothy Lundby Watts
Bob Wedin
Barbara A. Williams
Rhonda Zegler

***Welcome New Alumni
Network Members***

(between January 1, 2009 and December 31, 2009)

Brent Solseng	Lisa Lindgren
Christine Brabbs	Marlys Herwig
Clara Skjei	Monica Musich
Dave and Sue Como	Patty Falkowski
Diana Daugherty	Phyllis A. Shinnick
Doris Ferry	Raymond Millard
Evelyn Thompson	Robyn Chapman
Garth Norberg	Roger Fahey
Glayde Cory	Sarah Blumkin
James H. Larson	Sharon Petrik
Jamie Weighter	Tanya Butler
Janice Olsson	
Jerald Halvorson	
Julie Dietzler	

The Grand Forks Foundation for Education, Inc.
PO Box 5475
Grand Forks, ND 58206-5475

HELPING NEEDY STUDENTS

The Foundation manages two unique scholarships that help needy Grand Forks students during their K-12 public school years. The **Vincent Berg Trust** and the **Julian Norby Hands Up For Kids Endowment** each provide small awards for school or school-related activities like drama, speech, debate, and band. Scholarships help students from needy families who can't afford items like gym shoes, school supplies, and bus tickets, and offer encouragement to struggling students who need extra help to graduate on time.

Annual Meeting

The Annual Meeting of members will be held Thursday, February 11th, 2010 at 4p.m. at Grand Forks Public School Education Center, 2400 47th Ave So. Grand Forks, North Dakota.

All donors are invited to attend the annual meeting, at which Foundation activities and operations of the past year and future plans will be reviewed.

2010 Teachers Hall of Fame

The Grand Forks Public Schools Teachers Hall of Fame was instituted in 1995. The Foundation and Alumni Network sponsor the Hall of Fame to publicly thank and recognize outstanding and memorable retired educators who've made an impact on students. The Hall of Fame also is a means to honor the teaching profession as a whole for its vital role in shaping the future of individuals and society.

Any retired educator, including elementary or secondary classroom teachers, administrators, counselors, librarians, etc., is eligible for nomination by former students, colleagues, or the general public. Nominations are always accepted at the Foundation Office.

Save the DATE...Next induction ceremony will be in Oct 2010.